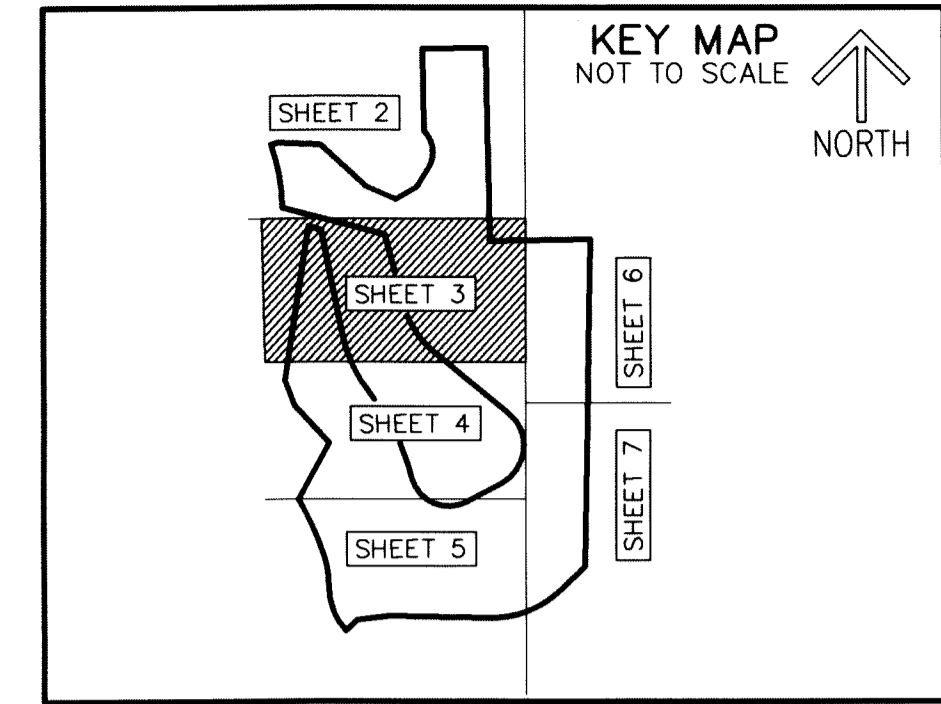


# ALTIS LAKE PUD

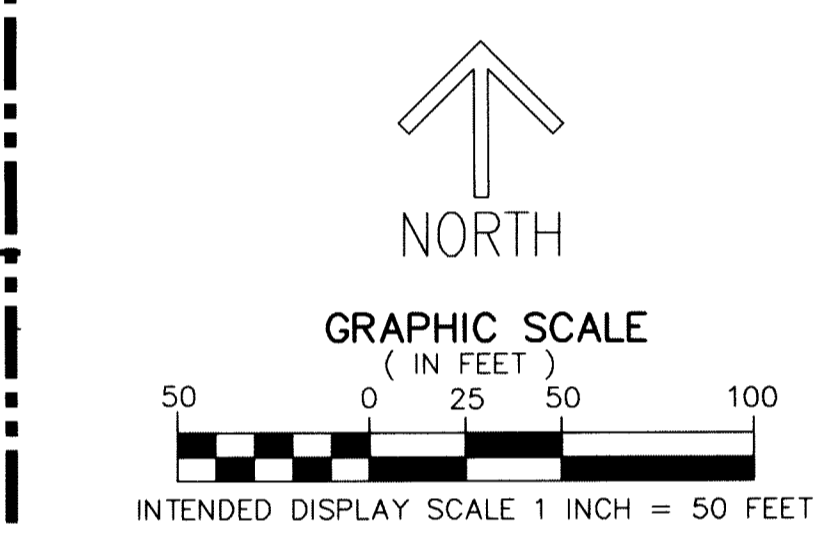
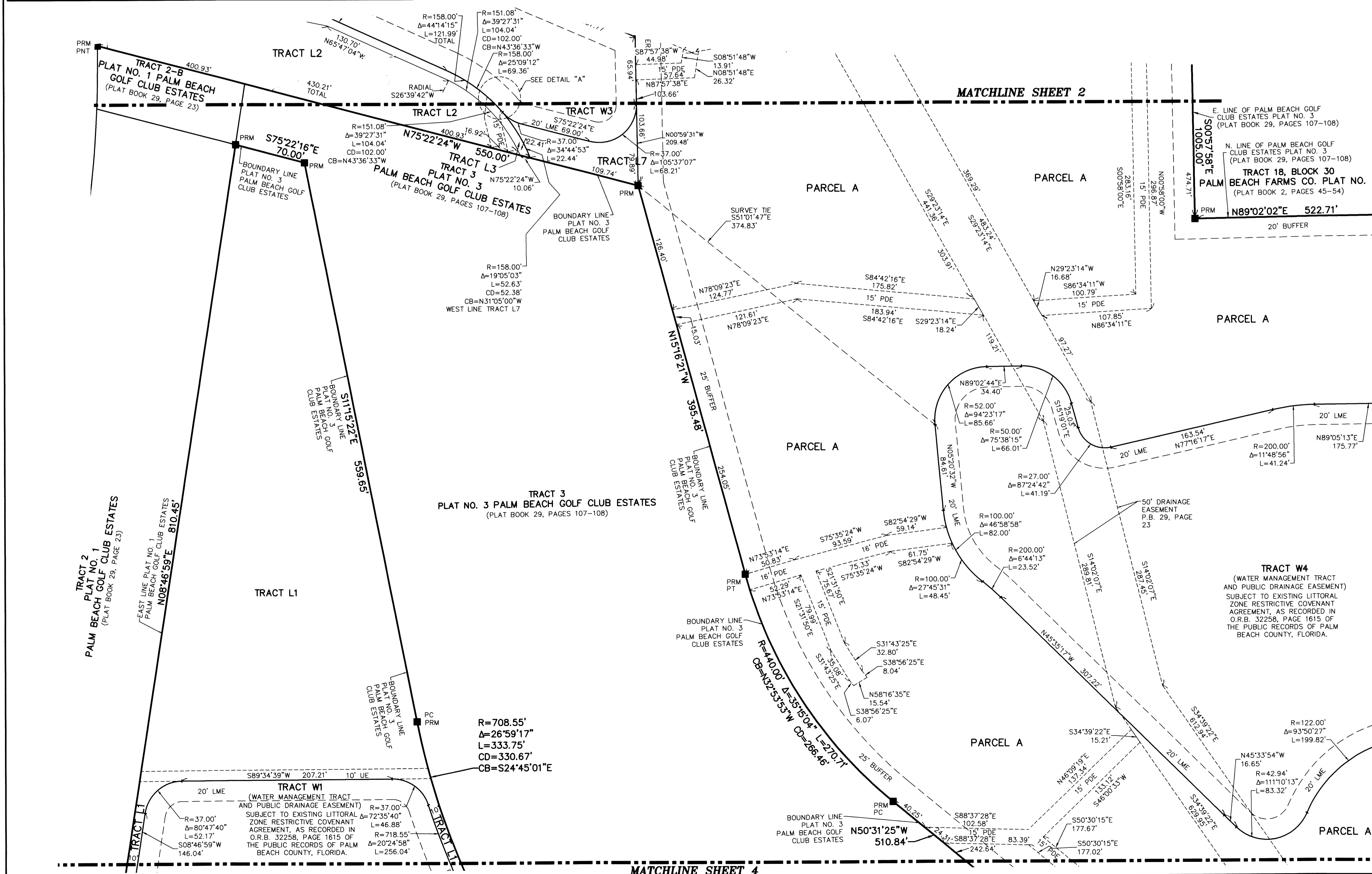
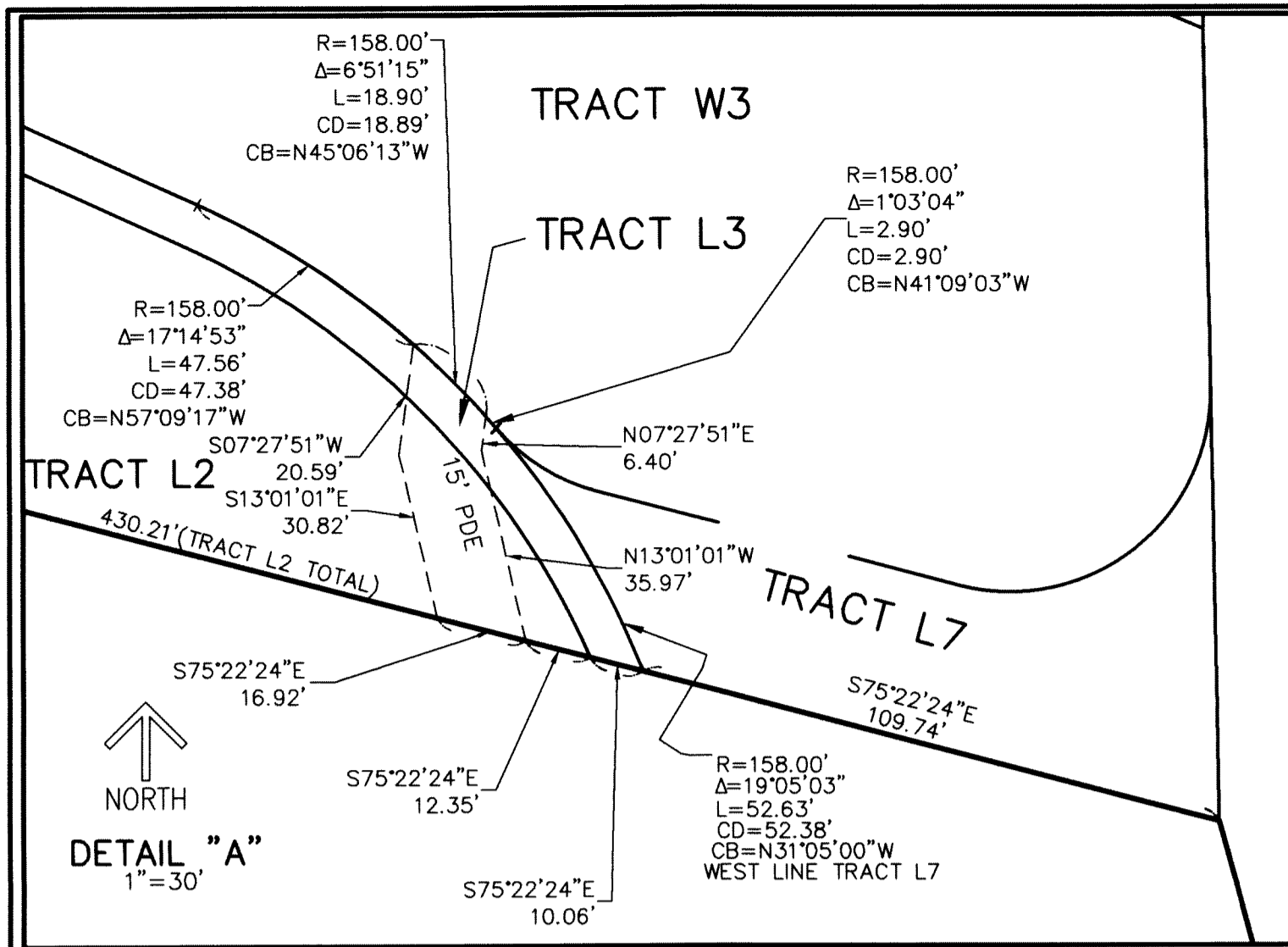
BEING A REPLAT OF PORTIONS OF BLOCK 30, PALM BEACH FARMS CO. PLAT NO. 3, ACCORDING TO THE PLAT THEREOF, AS RECORDED IN PLAT BOOK 2, PAGES 45 THROUGH 54 AND THE GOLF COURSE TRACT, PLAT NO. 3 PALM BEACH GOLF CLUB ESTATES, ACCORDING TO THE PLAT THEREOF, AS RECORDED IN PLAT BOOK 29, PAGE 107 AND ALL OF THE GOLF COURSE TRACT, PLAT NO. 4 PALM BEACH GOLF CLUB ESTATES, AS RECORDED IN PLAT BOOK 29, PAGE 204, ALL OF THE PUBLIC RECORDS OF PALM BEACH COUNTY, FLORIDA, LYING IN SECTION 27, TOWNSHIP 44 SOUTH, RANGE 42 EAST, PALM BEACH COUNTY, FLORIDA

THIS INSTRUMENT PREPARED BY  
DAVID P. LINDLEY  
OF  
**CAULFIELD & WHEELER, INC.**  
SURVEYORS - ENGINEERS - PLANNERS  
7900 GLADES ROAD, SUITE 100  
BOCA RATON, FLORIDA 33434 - (561)392-1991  
CERTIFICATE OF AUTHORIZATION NO. LB3591



199

SHEET 3 OF 7



**NOTES**  
**COORDINATES, BEARINGS AND DISTANCES**  
COORDINATES SHOWN ARE GRID  
DATUM = NAD 83 (90 ADJUSTMENT)  
ZONE = FLORIDA EAST  
LINEAR UNIT = US SURVEY FEET  
COORDINATE SYSTEM 1983 STATE PLANE  
TRANSVERSE MERCATOR PROJECTION  
ALL DISTANCES ARE GROUND, UNLESS OTHERWISE NOTED  
SCALE FACTOR = 1.0000295  
GROUND DISTANCE X SCALE FACTOR = GRID DISTANCE  
BEARINGS AS SHOWN HEREON ARE GRID DATUM,  
NAD 83 (1990 ADJUSTMENT), FLORIDA EAST ZONE.

**LEGEND/ABBREVIATIONS**  
C - CENTERLINE  
Δ - DELTA (CENTRAL ANGLE)  
CB - CHORD BEARING  
CD - CHORD DISTANCE  
D.B. - DEED BOOK  
E - EASTING (WHEN USED WITH COORDINATES)  
L - ARC LENGTH  
LME - LAKE MAINTENANCE EASEMENT  
LB - LICENSED BUSINESS  
N - NORTHING (WHEN USED WITH COORDINATES)  
O.R.B. - OFFICIAL RECORD BOOK  
PBEUE - PALM BEACH COUNTY UTILITY EASEMENT  
PC - POINT OF CURVATURE  
PCC - POINT OF COMPOUND CURVATURE  
PRC - POINT OF REVERSE CURVATURE  
PDE - PUBLIC DRAINAGE EASEMENT  
PT - POINT OF TANGENCY  
PNT - POINT OF NON-TANGENCY  
PUD - PLANNED UNIT DEVELOPMENT  
R - RADIUS  
(R) - RADIAL LINE  
PRM - DENOTES SET PERMANENT REFERENCE MONUMENT  
SET 4" X 4" X 24" CONCRETE MONUMENT WITH  
ALUMINUM DISK STAMPED "C&W PRM LB3591"  
UE OR U.E. - DENOTES UTILITY EASEMENT